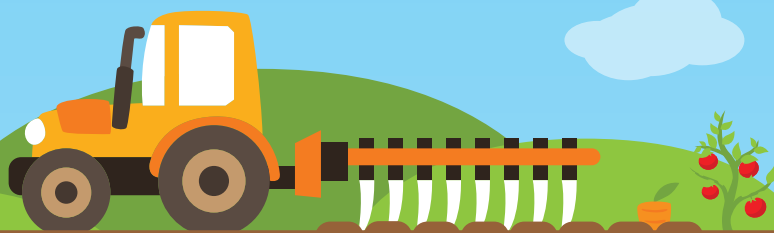


# FARM EQUIPMENT MAINTENANCE



## WHO PERFORMS EQUIPMENT MAINTENANCE ON THE FARM?



FARMERS



FAMILY MEMBERS



EMPLOYEES

Perform most of the routine maintenance items, including the changing of fluid and filters.

When maintenance is handled by others, producers turn to:



- DEALERSHIPS
- LOCAL MECHANICS

## HOW FREQUENTLY IS EQUIPMENT MAINTAINED OR INSPECTED?

Maintenance and/or inspections are handled on a regular basis.

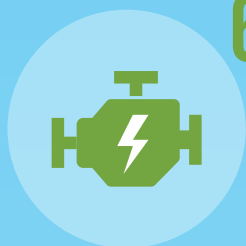
Respondents indicated that the following systems were inspected less than 3 months ago.



FLUIDS



HYDRAULIC SYSTEMS



ENGINES



BELTS & HOSES

## WHAT IS THE NORMAL INTERVAL FOR CHANGING OIL?



Engine oil is replaced on a regular schedule. The majority of respondents indicated that engine oil changing intervals were:

41% less than 200 hours 37% 200 to 300 hours

LEARN MORE AT:

[TRACTORLIFE.COM](http://TRACTORLIFE.COM)

## WHAT FACTORS MOST INTO FLUID PURCHASING DECISIONS?

When choosing brands of fluids, producers ranked:  
(Somewhat Important)

58%



PRICE

52%



DEALERS  
Recommendation

46%



MANUFACTURERS  
Recommendation