

# Optimize RX Yield Analysis Report

Farm Name - W-23 (283.7 ac.)

Constant vs Optimize RX-F/S

---



## ***Abstract***

- This field consists of 6 fertility management zones representing 283.7 ac.
- The average yield for this field was: 46.0 bu/ac
- The yield goal of the field was: 45.0 bu/ac
- Through Decisive Farming's Optimize RX-F/S, the field has seen an increase of: \$20.59/ac (Total of \$5842.12)
- By using Optimize RX-F/S, fertilizer savings were made in zones: 1, 2, 3
- The most benefit was seen in zones: 1, 2, 3, and 4

## ***Agronomic Summary***

- The average yield using Optimize RX-F/S was: 46.0 bu/ac (Exceeded Yield Goal by: 1.0 bu/ac)
- The average yield using constant rate was: 42.4 bu/ac (Did not exceed yield goal of 45.0 bu/ac)
- The average yield using Optimize RX-F/S exceeded constant rate by: 3.6 bu/ac
- Yield for zone # RX-1 was : 31.6 bu/ac (Exceeding constant rate of: 30.7 bu/ac and Yield Goal of: 30.0bu/ac)
- Yield for zone # RX-2 was : 32.9 bu/ac (Exceeding constant rate of: 30.0 bu/ac but not Yield Goal of: 37.0 bu/ac)
- Yield for zone # RX-4 was : 45.1 bu/ac (Exceeding constant rate of: 38.2 bu/ac and Yield Goal of: 45.0bu/ac)
- Yield for zone # RX-5 was : 53.1 bu/ac (Exceeding constant rate of: 53.0 bu/ac and Yield Goal of: 48.0bu/ac)
- Yield for zone # RX-6 was : 57.7 bu/ac (Exceeding Yield Goal of: 52.0 bu/ac but not constant rate of: 59.1bu/ac)

## ***Economic Summary***

- The total net return for the field is: \$5842.12 (\$20.59/ac)
- The market price for Wheat used in the analysis was \$6.50/bu
- The Cost of Optimize RX-F/S was \$5.70/ac based on a 4 year average with Decisive Farming
- The input costs of fertilizer and seed were: Blend = \$650/MT and Wheat Seed = \$10/bu
- Return on Investment for zone # 1 was : \$33.57/ac (\$27.71/ac from fertilizer savings)
- Return on Investment for zone # 2 was : \$32.83/ac (\$13.88/ac from fertilizer savings)
- Return on Investment for zone # 3 was : \$57.01/ac (\$3.45/ac from fertilizer savings)
- Return on Investment for zone # 4 was : \$42.60/ac

## ***Field Observations***

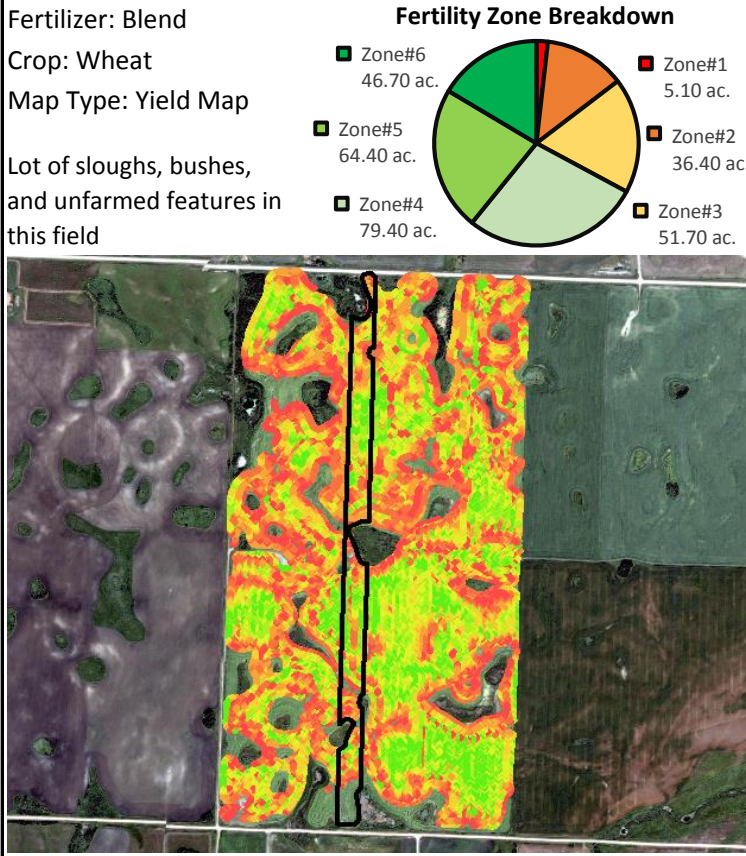
- The constant rate strip in this field would have difficulties representing the field as a whole due to the large number of sloughs, bushes, and other unfarmable features throughout.

# Optimize RX Yield Analysis Report



Farm Name - W-23 (283.7 ac.)

Constant vs Optimize RX-F/S



### Agronomics Summary (rate/ac)

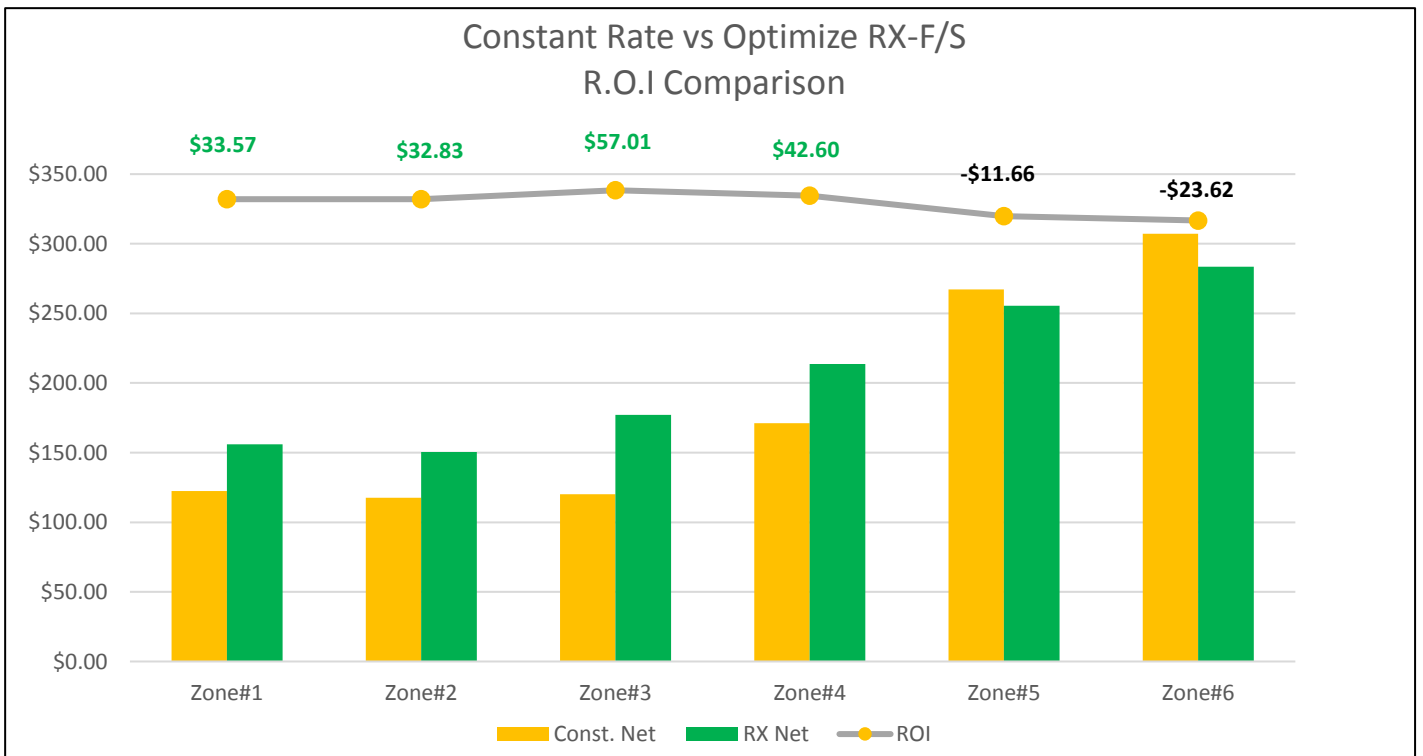
Zone	N	Blend	Seed	Yield Goal	Const Yield	RX Yield
Const.	0	200	110	45	42.4	46.0
RX-1	0	98	90	30	30.7	31.6
RX-2	0	137	104	37	30.0	32.9
RX-3	0	165	117	42	30.4	38.6
RX-4	0	177	130	45	38.2	45.1
RX-5	0	204	143	48	53.0	53.1
RX-6	0	204	156	52	59.1	57.7

### Economics Summary (\$/ac)

Crop Price: \$6.50      Optimize Cost: \$5.70

Zone	Revenue	Costs	Const Net	RX Net	R.O.I
Const.	\$275.53	\$77.31	\$198.22	\$218.81	-
RX-1	\$205.59	\$49.60	\$122.42	\$155.99	\$33.57
RX-2	\$213.83	\$63.43	\$117.57	\$150.40	\$32.83
RX-3	\$250.87	\$73.86	\$120.00	\$177.01	\$57.01
RX-4	\$293.24	\$79.57	\$171.07	\$213.67	\$42.60
RX-5	\$345.12	\$89.69	\$267.09	\$255.43	-\$11.66
RX-6	\$375.37	\$91.86	\$307.13	\$283.51	-\$23.62

**Net Return on Field: \$5842.12**  
**Net Return Per Acre: \$20.59**



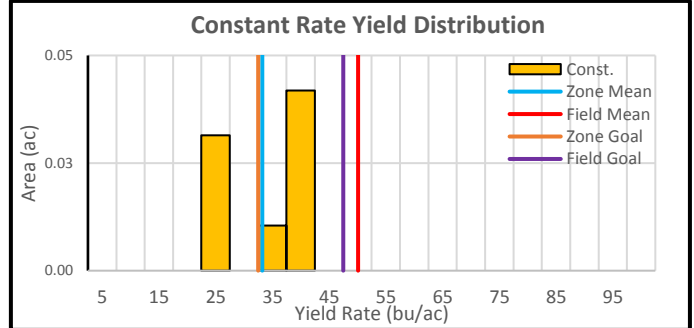
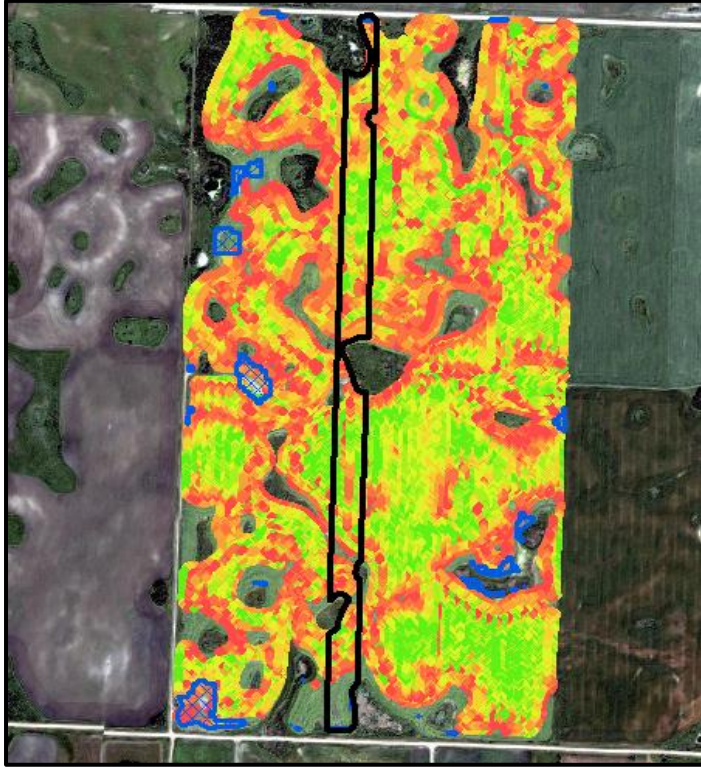
# Optimize RX Yield Analysis Report



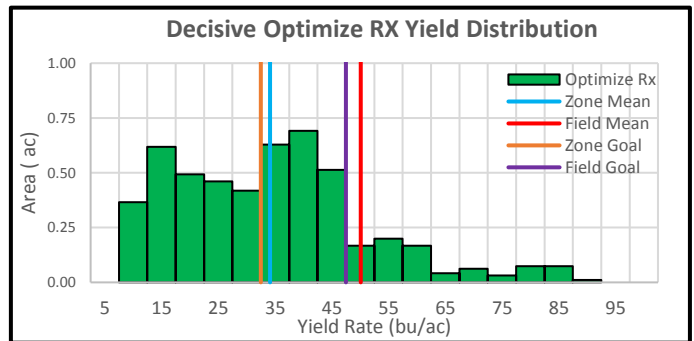
Farm Name - W-23 (283.7 ac.)

Constant vs Optimize RX-F/S

## Zone # 1 (5.1 ac)



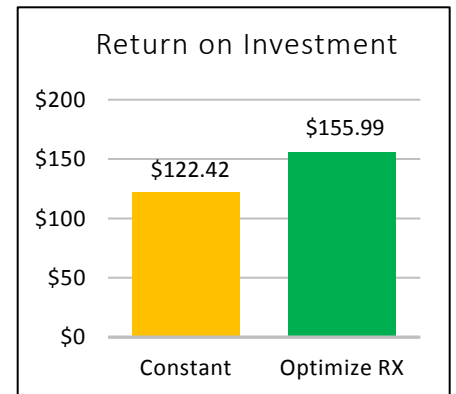
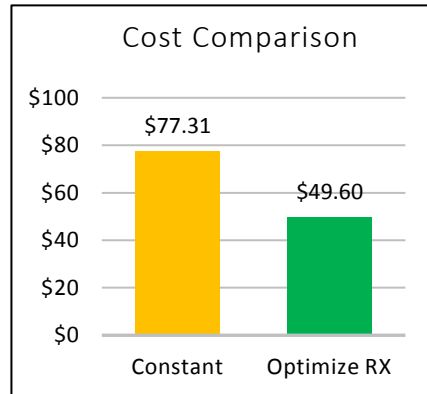
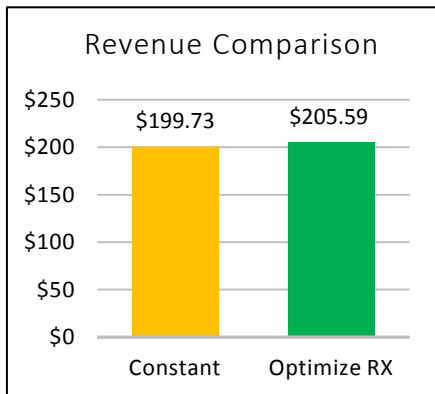
Area: 0.1 ac      Mean: 30.7 bu/ac      Std: 7.4 bu/ac



Area: 5.0 ac      Mean: 31.6 bu/ac      Std: 17 bu/ac

### Zone #1 Agronomic and Economic Summary

	N Rate (lb/ac)	N Cost (\$/ac)	Blend Rate (lb/ac)	Blend Cost (\$/ac)	Seed Rate (lb/ac)	Seed Cost (\$/ac)	Total Costs (\$/ac)	Yield (bu/ac)	Revenue (\$/ac)	NET (\$/ac)
Const.	0	\$0.00	200	\$58.98	110	\$18.33	\$77.31	30.73	\$199.73	\$122.42
RX-F	0	\$0.00	98	\$28.90	90	\$15.00	\$49.60	31.63	\$205.59	\$155.99
+/-	0	\$0.00	-102	-\$30.08	-20	-\$3.33	-\$27.71	0.90	\$5.86	\$33.57
<b>Total Net Return for Zone #1 @ 5.1 ac.</b>								<b>\$171.21</b>		





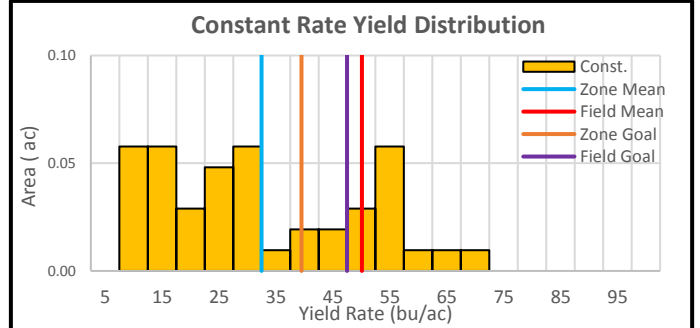
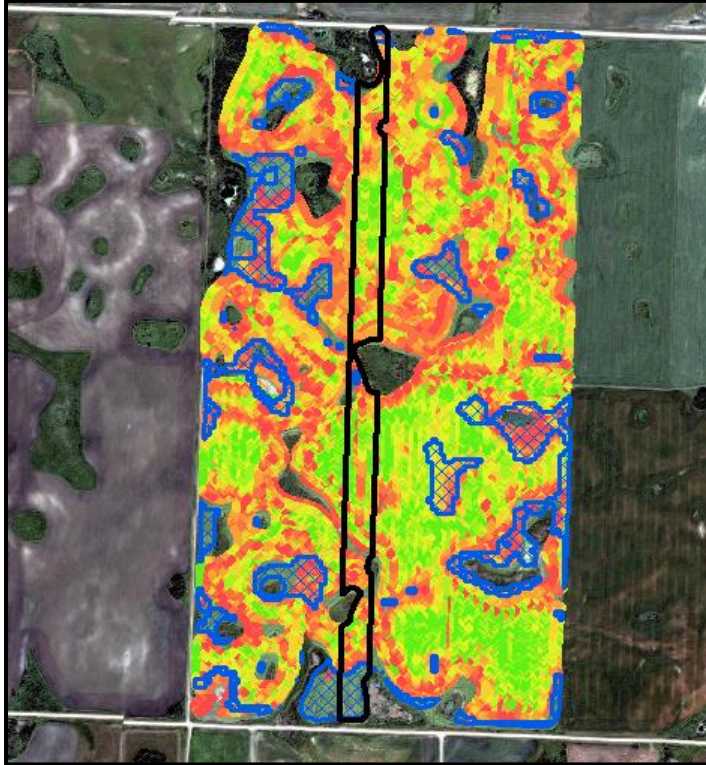
# Optimize RX Yield Analysis Report



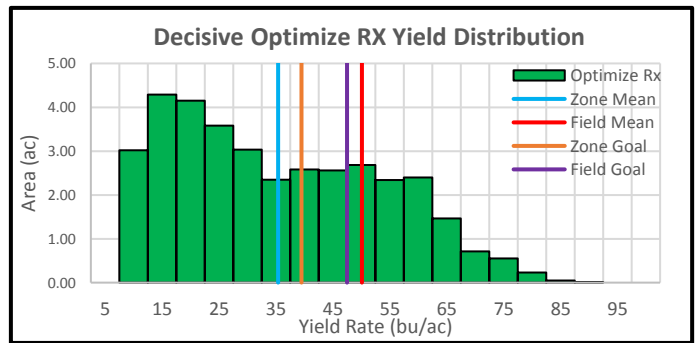
Farm Name - W-23 (283.7 ac.)

Constant vs Optimize RX-F/S

## Zone # 2 (36.4 ac)



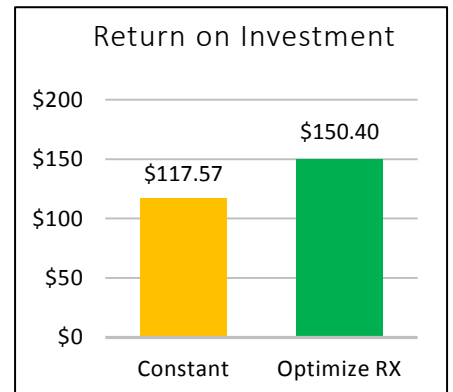
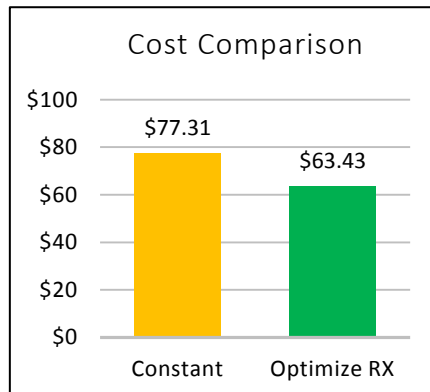
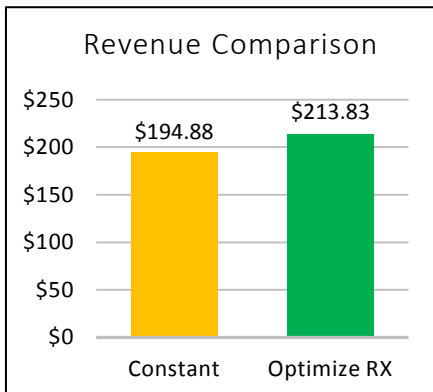
Area: 0.4 ac    Mean: 30.0 bu/ac    Std: 17.7 bu/ac



Area: 36.0 ac    Mean: 32.9 bu/ac    Std: 18.2 bu/ac

### Zone #2 Agronomic and Economic Summary

	N Rate (lb/ac)	N Cost (\$/ac)	Blend Rate (lb/ac)	Blend Cost (\$/ac)	Seed Rate (lb/ac)	Seed Cost (\$/ac)	Total Costs (\$/ac)	Yield (bu/ac)	Revenue (\$/ac)	NET (\$/ac)
Const.	0	\$0.00	200	\$58.98	110	\$18.33	\$77.31	29.98	\$194.88	\$117.57
RX-F	0	\$0.00	137	\$40.40	104	\$17.33	\$63.43	32.90	\$213.83	\$150.40
+/-	0	\$0.00	-63	-\$18.58	-6	-\$1.00	-\$13.88	2.92	\$18.95	\$32.83
<b>Total Net Return for Zone #2 @ 36.4 ac.</b>								<b>\$1,195.01</b>		



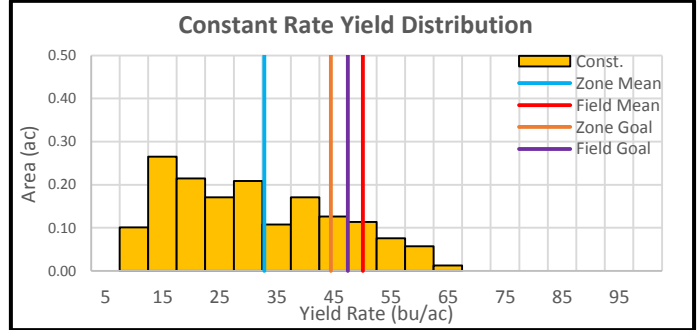
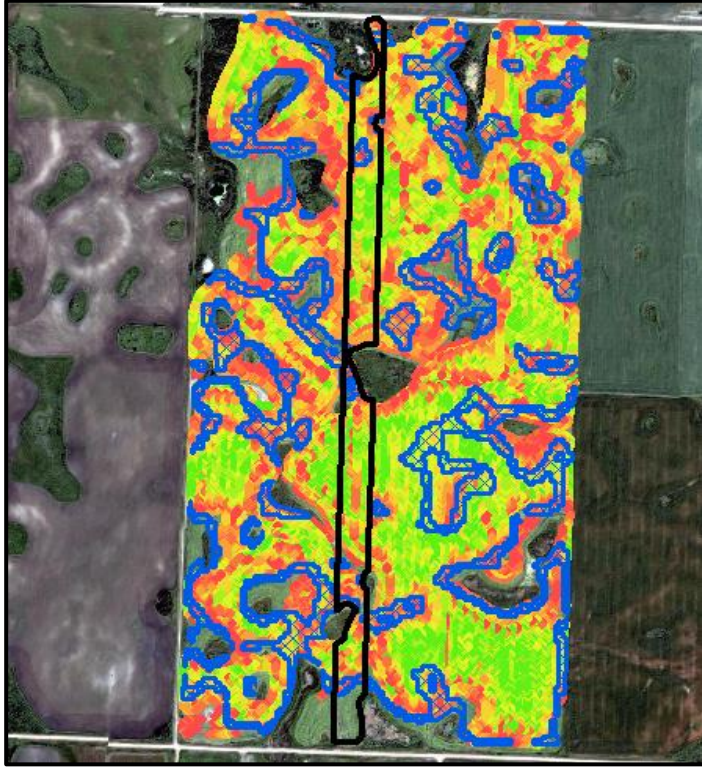
# Optimize RX Yield Analysis Report



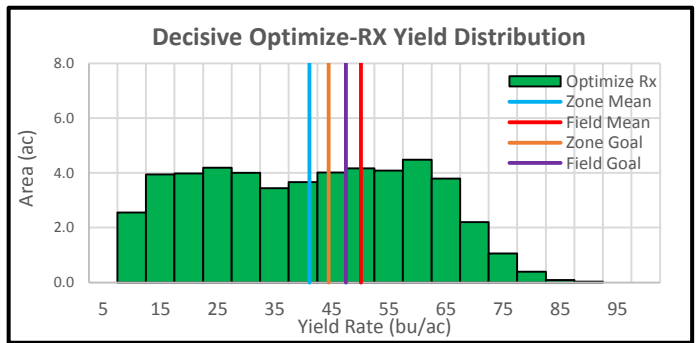
Farm Name - W-23 (283.7 ac.)

Constant vs Optimize RX-F/S

## Zone # 3 (51.7 ac)



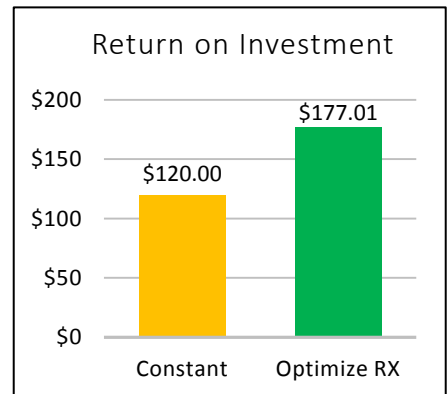
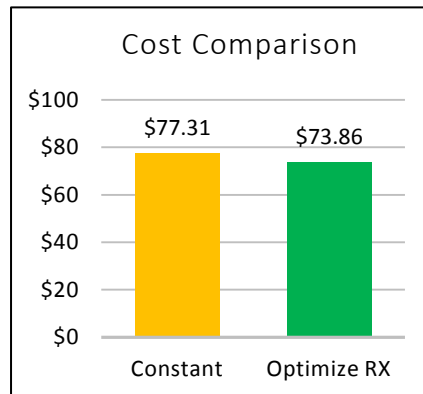
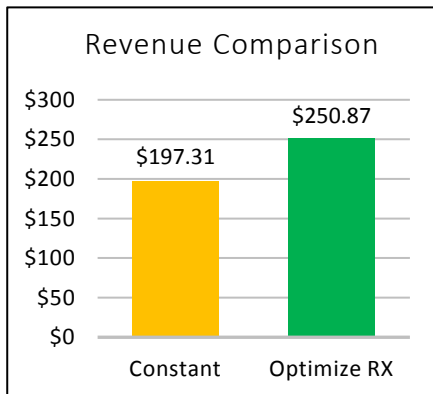
Area: 1.6 ac      Mean: 30.4 bu/ac      Std: 14.2 bu/ac



Area: 50.1 ac      Mean: 38.6 bu/ac      Std: 18.6 bu/ac

### Zone #3 Agronomic and Economic Summary

	N Rate (lb/ac)	N Cost (\$/ac)	Blend Rate (lb/ac)	Blend Cost (\$/ac)	Seed Rate (lb/ac)	Seed Cost (\$/ac)	Total Costs (\$/ac)	Yield (bu/ac)	Revenue (\$/ac)	NET (\$/ac)
Const.	0	\$0.00	200	\$58.98	110	\$18.33	\$77.31	30.36	\$197.31	\$120.00
RX-F	0	\$0.00	165	\$48.66	117	\$19.50	\$73.86	38.59	\$250.87	\$177.01
+/-	0	\$0.00	-35	-\$10.32	7	\$1.17	-\$3.45	8.24	\$53.56	\$57.01
<b>Total Net Return for Zone #3 @ 51.7 ac.</b>								<b>\$2,947.42</b>		



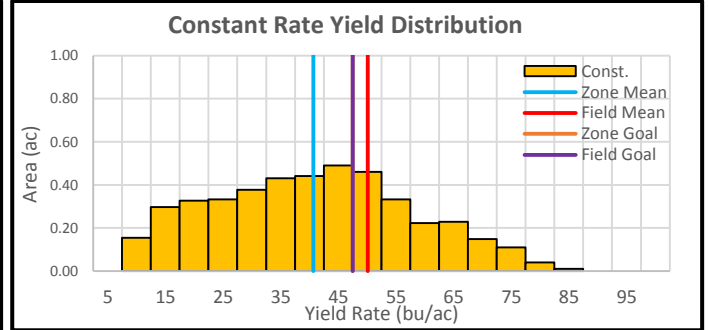
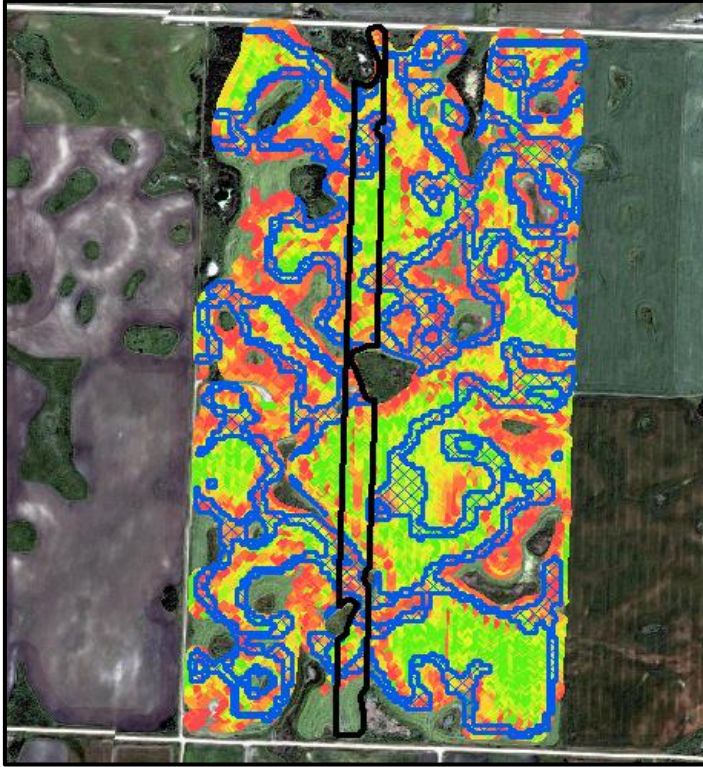
# Optimize RX Yield Analysis Report



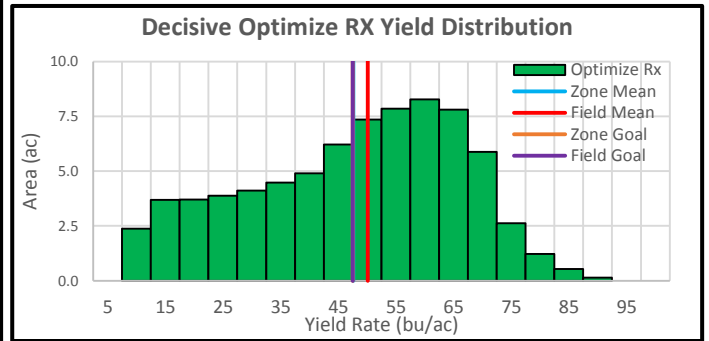
Farm Name - W-23 (283.7 ac.)

Constant vs Optimize RX-F/S

## Zone # 4 (79.4 ac)



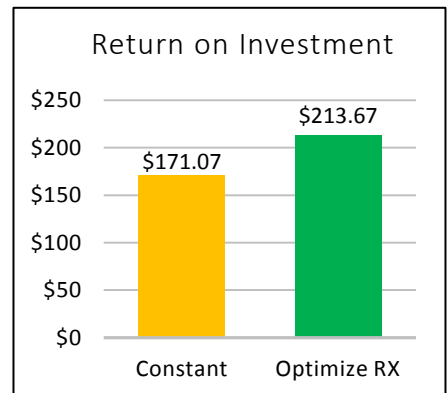
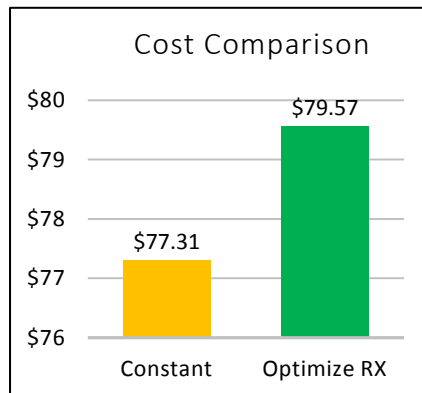
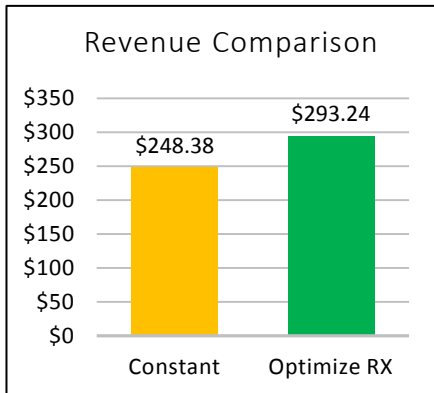
Area: 4.4 ac      Mean: 38.2 bu/ac      Std: 17.2 bu/ac



Area: 75.0 ac      Mean: 45.1 bu/ac      Std: 18.5 bu/ac

### Zone #4 Agronomic and Economic Summary

	N Rate (lb/ac)	N Cost (\$/ac)	Blend Rate (lb/ac)	Blend Cost (\$/ac)	Seed Rate (lb/ac)	Seed Cost (\$/ac)	Total Costs (\$/ac)	Yield (bu/ac)	Revenue (\$/ac)	NET (\$/ac)
Const.	0	\$0.00	200	\$58.98	110	\$18.33	\$77.31	38.21	\$248.38	\$171.07
RX-F	0	\$0.00	177	\$52.20	130	\$21.67	\$79.57	45.11	\$293.24	\$213.67
+/-	0	\$0.00	-23	-\$6.78	20	\$3.34	\$2.26	6.90	\$44.86	\$42.60
<b>Total Net Return for Zone #4 @ 79.4 ac.</b>								<b>\$3,382.44</b>		





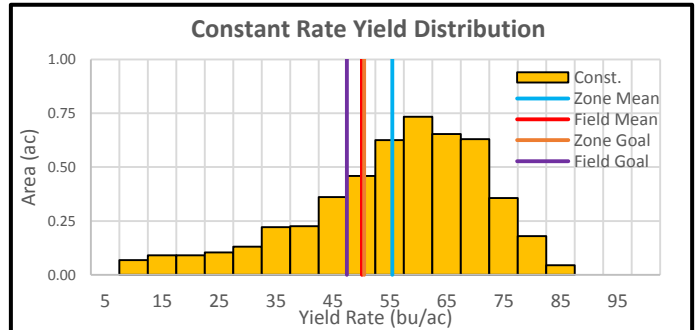
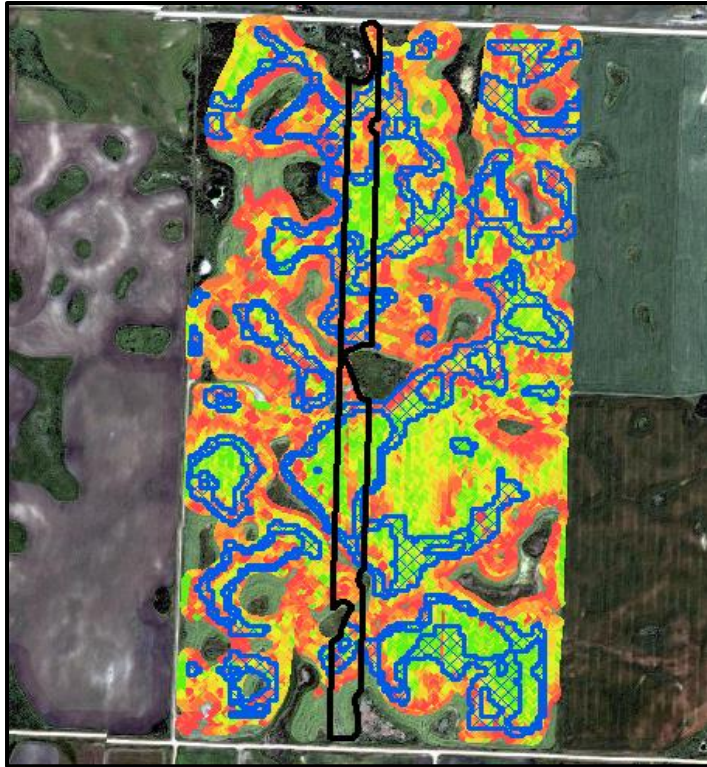
# Optimize RX Yield Analysis Report



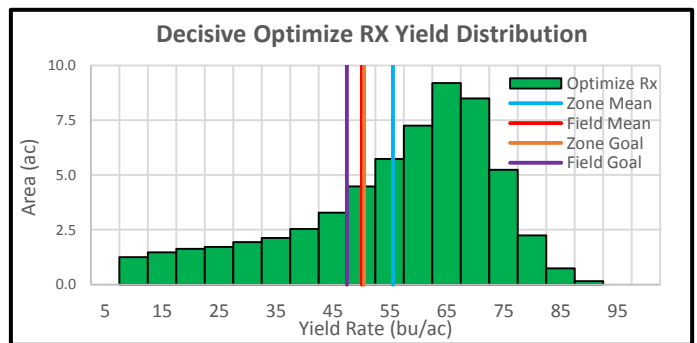
Farm Name - W-23 (283.7 ac.)

Constant vs Optimize RX-F/S

## Zone # 5 (64.4 ac)



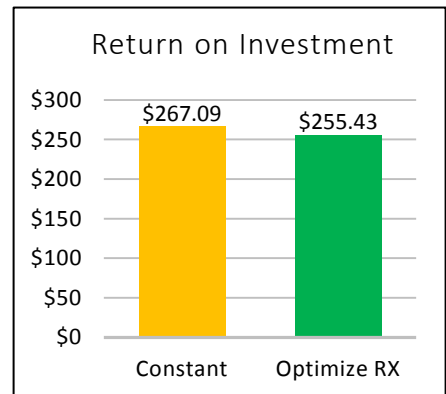
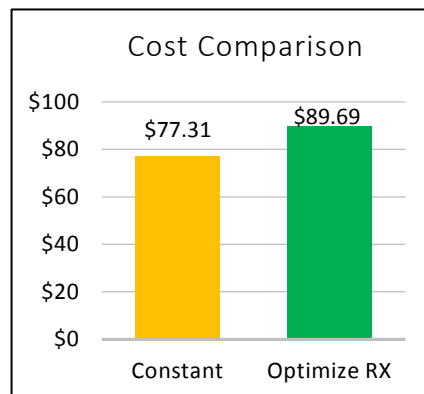
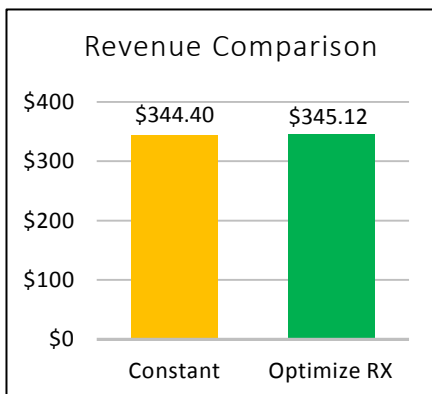
Area: 5.0 ac      Mean: 53.0 bu/ac      Std: 15.9 bu/ac



Area: 59.4 ac      Mean: 53.1 bu/ac      Std: 17.7 bu/ac

### Zone #5 Agronomic and Economic Summary

	N Rate (lb/ac)	N Cost (\$/ac)	Blend Rate (lb/ac)	Blend Cost (\$/ac)	Seed Rate (lb/ac)	Seed Cost (\$/ac)	Total Costs (\$/ac)	Yield (bu/ac)	Revenue (\$/ac)	NET (\$/ac)
Const.	0	\$0.00	200	\$58.98	110	\$18.33	\$77.31	52.98	\$344.40	\$267.09
RX-F	0	\$0.00	204	\$60.16	143	\$23.83	\$89.69	53.10	\$345.12	\$255.43
+/-	0	\$0.00	4	\$1.18	33	\$5.50	\$12.38	0.11	\$0.72	-\$11.66
<b>Total Net Return for Zone #5 @ 64.4 ac.</b>							<b>-\$750.90</b>			



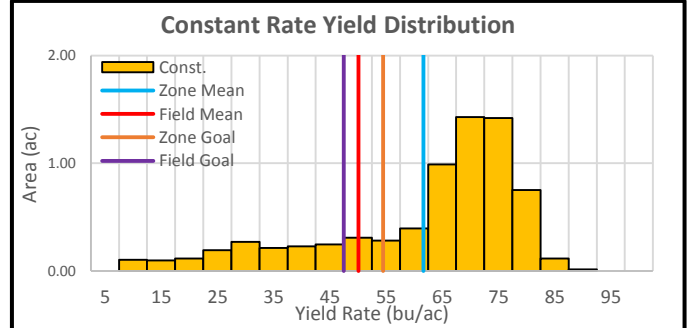
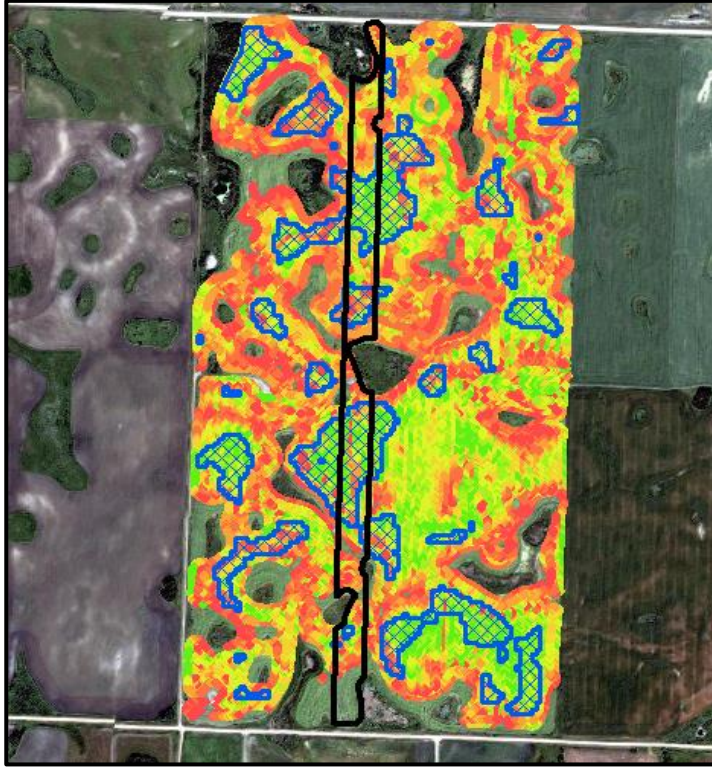
# Optimize RX Yield Analysis Report



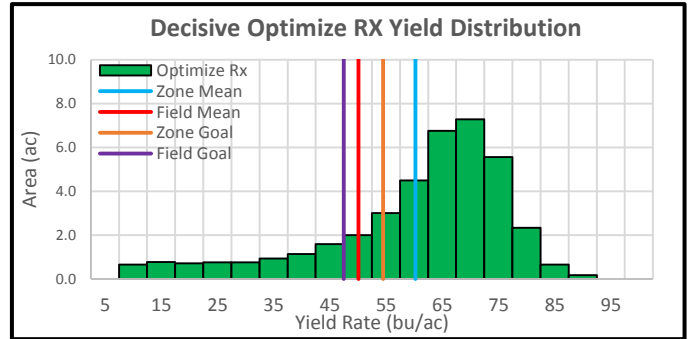
Farm Name - W-23 (283.7 ac.)

Constant vs Optimize RX-F/S

## Zone # 6 (46.7 ac)



Area: 7.2 ac    Mean: 59.1 bu/ac    Std: 17.8 bu/ac



Area: 39.5 ac    Mean: 57.7 bu/ac    Std: 16.8 bu/ac

### Zone #6 Agronomic and Economic Summary

	N Rate (lb/ac)	N Cost (\$/ac)	Blend Rate (lb/ac)	Blend Cost (\$/ac)	Seed Rate (lb/ac)	Seed Cost (\$/ac)	Total Costs (\$/ac)	Yield (bu/ac)	Revenue (\$/ac)	NET (\$/ac)
Const.	0	\$0.00	200	\$58.98	110	\$18.33	\$77.31	59.14	\$384.44	\$307.13
RX-F	0	\$0.00	204	\$60.16	156	\$26.00	\$91.86	57.75	\$375.37	\$283.51
+/-	0	\$0.00	4	\$1.18	46	\$7.67	\$14.55	-1.40	-\$9.07	-\$23.62
<b>Total Net Return for Zone #6 @ 46.7 ac.</b>								<b>-\$1,103.05</b>		

